

TERRA WALL LIGHT

SKU:CAMORO--201-9993.2

BULBS

Quantity: 2
Type: G9 Wattage:
28W (max)





MATERIALS

Body: Iron
Details: Brass

Dimensions

Height: 55 cm | 21.6 in
Width: 30 cm | 11.8 in
Depth: 8 cm | 3.1 in

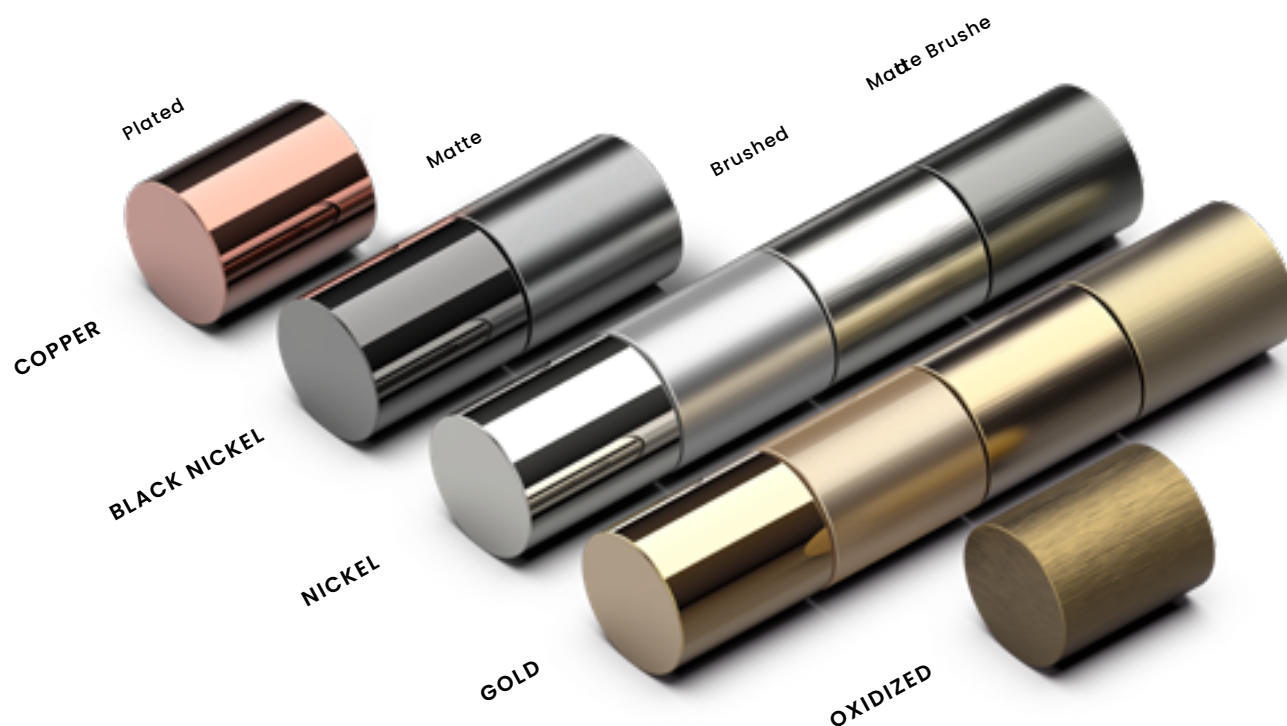


-  - Products manufactured according the European norm of security EN 60 598-1.
-  - Products adjusted for instalation in surfaces normally inflammable.
-  - Products of class II. The electric isolation is double or reinforced.
-  - Products with the possibility of instalation of low-energy consuption bulbs.

CUSTOMIZATION OPTIONS

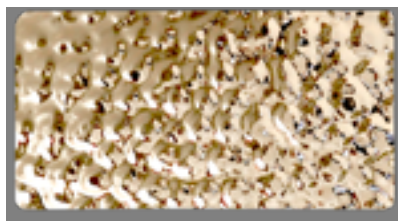
FINISHES

Metal Finishes

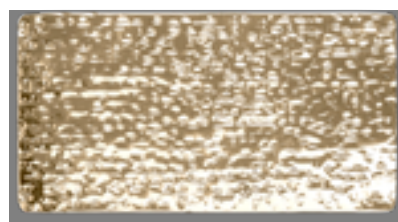


THE IMAGES USED IN THIS CATALOGUE ARE PURELY FIGURATIVE AND THE FINISHES OF THE PIECES MAY BE DIFFERENT.
THEREFORE, WE ENCOURAGE YOU TO CHECK IT WITH YOUR BUSINESS DEVELOPMENT MANAGER.

Textures



Hammered



Canyon Hammered